

# YSGOL DYFFRYN OGWEN



**YMLAEN I FLWYDDYN 12**

**Llyfryn / Handbook**

**BI. 12 / Yr 12**

**2008- 2009**



CYMHWYSTER  
**BAGLORIAETH  
CYMRU** | **WELSH  
BACCALAUREATE  
QUALIFICATION**



[bagloriaethcymru.org.uk](http://bagloriaethcymru.org.uk)  
[welshbaccalaureate.org.uk](http://welshbaccalaureate.org.uk)

**PENNAETH / HEADTEACHER**

**MR ALUN LLWYD M.A.,**

YSGOL DYFFRYN OGWEN

BETHESDA, GWYNEDD, LL57 3NN.

Ffôn/Tel: 01248 600291 - Ffacs/Fax: 01248 600082

**PERSONNEL SY’N YMWNEUD AG ADDYSG ÔL 16**

**PERSONNEL INVOLVED WITH 16+ EDUCATION**

\*\*\*\*\*

**Dirprwy Bennaeth a chyfrifoldeb penodol am Flwyddyn 12 a 13**  
**Deputy Head Teacher with specific responsibility for Years 12 and 13**

Mr Paul Matthews-Jones

\*\*\*\*\*

**Tiwtoriaid**

**Tutors**

Mr Dylan Davies

Miss Amy Carter

Mrs Eleri Mitchelmore

\*\*\*\*\*

**Gyrfaoedd**

**Careers**

Mrs Rhiannon Thomas

\*\*\*\*\*

**Mentoriaid ‘ Cymhwyster Bagloriaeth Cymru’**

Mr Alun Llwyd

Mr Paul Matthews-Jones

Mr Dafydd Harries Davies

Mr Dylan Davies

Miss Amy Cartner

## **AMCANION CYFFREDINOL ADDYSG ÔL 16 YN YSGOL DYFFRYN OGWEN**

- I roi addysg a chyfarwyddyd cytbwys a buddiol i bob myfyriwr trwy gynnig cyrsiau addas mewn amryfal feysydd.
- I gyrraedd safon academiaidd cyn uchred â phosibl.
- I ysgogi myfyrwyr i fod yn fwy annibynnol eu meddwl, eu barn a'u hymroddiad i addysg uwch.
- I roi cyfle i bawb ymgymryd â chyfrifoldeb a chymryd rhan mor gyflawn ag sydd bosibl ym mywyd yr Ysgol a'r gymdeithas.
- I roi cyfarwyddyd a chymorth i fyfyrwyr ynglŷn â gyrfa wedi gadael yr Ysgol.

### **Pam dewis astudio yn ysgol Dyffryn Ogwen?:**

- Dewis eang o gyrsiau UG / A2
- Cyfle i ennill 'Cymhwyster Bagloriaeth Cymru'
- Cyfle i feithrin ac ennill cymhwyster yn y sgiliau allweddol
- Canolfan 6ed ddsbarth newydd gydag ystafell adnoddau newydd sbon gyda'r offer technolegol diweddaraf
- Cyfleoedd i fagu profiadau newydd drwy ddilyn cwrs craidd sy'n cynnwys profiad gwaith , gwaith gwirfoddol a chymunedol a blasu iaith dramor.
- Cyfle i arwain prosiectau ysgol megis ymgyrchoedd dyngarol a gweithgareddau allgyrsiol.
- Wythnos anwytho
- Stiwdio fidio cynadleddau newydd
- Tiwtoriaid ac athrawon profiadol yma i'ch cefnogi.
- Parhau a'r rhaglen 'Dawn a Chyfle' - Gall hyn olygu cynnig diamod gan Brifysgol Bangor yn ogystal â grant ariannol, sydd ar hyn o bryd yn £1000



## **GENERAL AIMS OF POST 16 EDUCATION AT YSGOL DYFFRYN OGWEN**

- To give all students an education that is balanced and as worthwhile as possible by offering suitable courses in a variety of fields.
- To reach the highest possible academic standard.
- To urge students to be more independent in their thinking and committed to their higher education.
- To give everyone an opportunity to undertake responsibility and to participate as fully as possible in school and community life.
- To give advice and help to students regarding career choices after leaving school.

## **Why choose to study at Ysgol Dyffryn Ogwen?**

- Wide range of courses at AS/A Level.
- A Welsh BaccaLaureate Qualification Centre
- An opportunity to obtain accreditation for Key Skills.
- Resource centre equipped with modern facilities, including a 6th Form centre.
- Opportunities to follow a new core skills course which will enable students to experience work based learning, voluntary community work and to taster sessions in a modern foreign language.
- A variety of extra curricular activities.
- 6<sup>th</sup> Form induction week with outdoor activities
- Video conferencing facilities.
- Experienced tutors and teachers here to support students.
- An opportunity to continue with the “Talent and Opportunity” programme with the University of Wales, Bangor.



## **CYFLWYNIAD**

Mae'r cwricwlwm Addysg ôl 16 wedi ei gynllunio i alluogi myfyrwyr i astudio amrywiaeth eang o bynciau ar draws dwy flynedd.

**Blwyddyn 12** Pynciau wedi eu cynllunio i gynnig gwell dilyniant i TGAU a byddwch yn ennill y cymhwyster UWCH GYFRANNOL (UG) ar ôl astudio unedau ym mhob pwnc a ddewisir.

**Blwyddyn 13** Fel arfer byddwch yn parhau â'ch pynciau UG ac yn astudio unedau pellach er mwyn yn ennill y cymhwyster SAFON UWCH.

Gellir sefyll arholiadau diwedd uned ym misoedd Ionawr a Mehefin ym mlynnyddoedd 12 a 13 a chaniateir ail sefyll unrhyw uned UNWAITH yn unig. Nid yw'n bosibl astudio unedau U2 heb astudio unedau UG.

## **FAINT O BYNCIAU? AMSER ADDYSGU/AMSER DYSGU?**

Mae'n debygol y byddwch am ddewis 3 pwnc, gan fod pob disgybl yn dilyn 'Cymhwyster Bagloriaeth Cymru'. Bydd y mwyafrif yn parhau a'r 3 ym mlwyddyn 13. Drwy gytundeb bydd posib i chi astudio 2 neu 4 pwnc dewis

**Amser Addysgu** - h.y. lle y byddwch mewn gwersi ac felly mewn cysylltiad uniongyrchol â'ch athrawon.

**Amser Dysgu** - h.y. lle y byddwch yn gweithio'n annibynnol yn astudio neu'n ymchwilio. Fe ddylech dreulio rhan helaeth o'ch amser digyswllt yn gweithio yn yr ystafell waith bwrpasol. Mae'n holl bwysig eich body n meithrin a datblygu agwedd aeddfed a chyfrifol at eich gwaith. Eich cyfrifoldeb chi yw rheoli eich amser a sicrhau eich body n cwblhau eich gwaith ar amser.

Mae'n holl bwysig eich bod yn meithrin sgiliau 'Addysg Uwch' yn y cyd-destun hwn. Eich cyfrifoldeb CHWI yw rheoli eich amser digyswllt er mwyn cwblhau eich asesiadau a'ch tasgau AR AMSER ac I'R SAFON angenrheidiol.

Llwybr academaidd yw dilyn cyrsiau Uwch Gyfrannol a Lefel A, ac os ydych yn penderfynu dychwelyd i'r 6ed dosbarth eich cam cyntaf yw dewis cyrsiau addas. Isod mae rhestr posibl o bynciau a ellir eu hastudio yn Ysgol Dyffryn Ogwen. Dylid cadw mewn cof fod cynnal cyrsiau yn ddibynnol ar niferoedd ac adnoddau

## **INTRODUCTION**

The Post 16 Curriculum is designed to encourage a wider selection of subjects to be studied over a two year period .

**Year 12** Subjects have been tailored to offer a better continuum to GCSE. The first 2 or 3 units of each subject studied will give you an ADVANCED SUBSIDIARY (AS)

**Year 13** usually you will continue with your chosen subjects and study further units which will give you an ADVANCED LEVEL (A) qualification.

End of unit examinations may be taken in January and June in Years 12 and 13 and only ONE opportunity to re-sit any unit will be allowed. It is not possible to study A2 units without studying AS units.

## **HOW MANY SUBJECTS? / TEACHING TIME / LEARNING TIME?**

It is likely that you will choose 3 subjects, due to the fact that every learner will follow the 'Welsh Baccalaureate Qualification'. The majority will continue to study 3 subjects at A2 level in year 13. However other models can be accommodated.

**Teaching Time** i.e. Teaching Time is the time you spend in lessons with direct contact with your teacher(s).

**Learning Time** i.e. the time you will be studying independently and researching. The majority of non contact hours should be spent working and studying in the 6<sup>th</sup> form study room.

It is vital that you adopt a 'Higher Education' methodology in this respect. It is YOUR responsibility to manage your non-contact time effectively so as to complete all your assignments and targets ON TIME and to the required STANDARD.

**Advanced and Subsidiary Courses are both an academic learning path. It is essential that you choose your courses carefully. Here is a list of subjects that are offered by Ysgol Dyffryn Ogwen. However it must be stated that each course is dependent on factors such as adequate numbers and resources and therefore may be subject to change.**

## Rhestr o bynciau y gellir eu hastudio yn yr ysgol

Cymraeg    Saesneg    Mathemateg    Technoleg  
Daearyddiaeth    Hanes    Astudiaethau Crefyddol  
Celf    Technoleg Gwybodaeth    Bioleg    Cemeg  
Ffiseg    Addysg Gorfforol    Electroneg    Drama  
Seicoleg    Y Gyfraith



### **Beth yw Cymhwyster Bagloriaeth Cymru?**

Cymhwyster cyffrous i fyfyrwyr yng Nghymru yw Bagloriaeth Cymru ac mae'n ychwanegu dimensiwn newydd a gwerthfawr at y pynciau a'r cyrsiau sydd eisoes ar gael i fyfyrwyr rhwng 14 ac 19 oed. Mae'n cyfuno sgiliau datblygiad personol gyda chymwysterau cyfredol fel Lefel A , a TGAU i ffurfio un dyfarniad ehangach a gaiff ei werthfawrogi gan gyflogwyr a phrifysgolion. Yn bwysicaf oll, mae'r rhai sy'n astudio ar gyfer y cymhwyster yn elwa o'r hyder y mae'n ei ennyn ynddynt.

Cyflwynwyd Bagloriaeth Cymru gan Lywodraeth Cynulliad Cymru er mwyn gweddnewid dysgu i bobl ifanc yng Nghymru. Mae'n rhoi profiad ehangach na rhai academiaidd pur yn unig, i gyd-fynd ag amrywiol anghenion pobl ifanc. Gellir ei astudio yn y Gymraeg neu'r Saesneg, neu trwy gyfuno'r ddwy iaith.

### **Beth mae Bagloriaeth Cymru yn ceisio'i gyflawni?**

Trwy ychwanegu sgiliau datblygiad personol at gymwysterau galwedigaethol neu astudiaethau academiaidd, mae bagloriaeth Cymru'n helpu pobl ifanc i gyflawni mwy. Mae'n eu harfogi'n well ar gyfer y byd gwaith, yn rhoi gwell gwybodaeth iddynt ac yn eu gwneud yn ddinasyddion mwy brwd.

Mae tystysgrif Bagloriaeth Cymru hefyd yn brawf bod myfyrwyr wedi datblygu'r Sgiliau Allweddol a gaiff eu hystyried yn rhai pwysig gan gyflogwyr a phrifysgolion. Mae hefyd yn dangos eu bod wedi ehangu eu haddysg bersonol a chymdeithasol, wedi ymgymryd ag ymchwiliad unigol, ac wedi cael profiad gwaith, ac wedi chwarae rhan frwd mewn prosiect cymunedol.

## AS / A Level Subject choices

Welsh      English      Mathematics      Technology  
Geography      History      Religious Studies  
Art      Information Technology      Biology      Chemistry  
Physics      Physical Education      Electronics      Drama  
Psychology      Law



### **What is the Welsh Baccalaureate Qualification?**

The Welsh Baccalaureate is an exciting qualification that adds a valuable new dimension to the subjects and courses already available to 14-19 year old students.

It combines personal development skills with existing qualifications like A Levels, NVQs and GCSEs to make one wider award that is valued by employers and universities.

The Welsh Assembly Government introduced the Welsh Baccalaureate to transform learning for young people in Wales. It gives broader experience than traditional learning programmes, to suit the diverse needs of young people. IT can be studied in English or Welsh, or a combination of the two languages.

### **What does it set out to achieve?**

By adding personal development skills to vocational qualifications or academic study, the Welsh Baccalaureate helps young people achieve more. IT makes them better equipped for the world of work, better informed and more active citizens.

It allows for more flexibility in their studies, whatever mix of courses they are following. Students become better prepared for further and higher education, as well as employment.

A Welsh Baccalaureate qualification is also proof that a student has developed the Key Skills considered important by employers and universities. It also shows they have furthered their personal and social education, undertaken an individual investigation, gained work experience and actively participated in a community project.

## **Yn Ysgol Dyffryn Ogwen bydd dwy ran bagloriaeth Cymru'n gweithio gyda'i gilydd fel a ganlyn.**

1, 'Opsionau' yw'r rhan gyntaf, a'r rheiny wedi'u dewis o blith y cyrsiau Uwch Gyfrannol fydd ar gael yn Ysgol Dyffryn Ogwen.

2, 'Rhaglen Graidd' yw'r ail ran. Dyma bump cydran y Rhaglen Graidd:

- **Sgiliau Allweddol** – yn ogystal ag o'u hopsionau, mae myfyrwyr yn meithrin Sgiliau Allweddol trosglwyddadwy drwy'r pedair cydran arall a amlinellir isod.
- **Cymru, Ewrop a'r Byd** - cyfle i ddysgu mwy am Gymru a'i pherthynas ag Ewrop a'r Byd. Caiff modiwl iaith ar lefel addas i'r myfyrwyr ei gynnwys yn y gydran hon.
- **Addysg Gysylltiedig â Gwaith** - yn cynnwys gweithio gyda chyflogwyr a chymryd rhan mewn gweithgarwch menter tîm er mwyn helpu'r myfyriwr i ddeall sut mae busnesau'n gweithio.
- **Addysg Personol a Chymdeithasol** – yn helpu'r myfyriwr i archwilio materion yn y byd modern:teulu,iechyd,cyberthnasu, dinasyddiaeth a datblygiad cynaliadwy. Mae'n cynnwys gweithgarwch yn y gymuned leol.
- **Astudiaeth Unigol** – cyfle i ymchwilio pwnc o ddiddordeb i chi o'r opsiynau neu'r craidd.

### **Mae Craidd Bagloriaeth Cymru gyfwerth a 120 o bwyntiau UCAS sy'n cyfateb i radd A safon Uwch.**

Rhoddir pwyslais ar ddysgu trwy wneud. Mae ymweliadau â chyfraniadau gan siaradwyr gwadd yn ganolog i'r cwrs. Caiff POB myfyriwr gefnogaeth gan diwtor a MENTOR personol.

Asesu – Nid oes arholiad ar ddiwedd y cwrs, ond bydd pwyslais a gofyn i fyfyrwyr:

- gadw llyfr log manwl a chofnodi profiadau
- casglu portffolio o dystiolaeth ar gyfer y 6 sgil allweddol
  - cwblhau ymchwiliad unigol ar bwnc o'u dewis.
- Bwriedir cwblhau'r gwaith yn fuan ym mlwyddyn 13

### **Sgiliau Allweddol**

Caiff rhai sgiliau eu hadnabod drwy'r wlad fel Sgiliau Allweddol. Dyma'r sgiliau hollbwysig y bydd eu hangen arnoch i wneud yn dda mewn addysg a hyfforddiant, i lwyddo yn y gwaith ac i ddod ymlaen mewn bywyd.

Gellir ennill cymwysterau ym mhob un o'r chwech Sgil Allweddol ar lefelau 1 (yr hawsaf) i 3 (yr anoddaf). Fe fydd myfyrwyr blwyddyn 12 yn anelu am lefelau 2 a 3 yn y chwech sgil.

### **Beth yw'r Sgiliau Allweddol?**

**Cyfathrebu**

**Cymhwyso Rhif**

**Technoleg Gwybodaeth a Chyfathrebu**

**Datrys problemau**

**Gweithio gydag eraill**

**Gwella dy ddysgu a'ch perfformiad eich hun**

## **In Ysgol Dyffryn Ogwen The Welsh Bacculaureate Qualification consists of two parts:**

1. **Options**- courses/ program currently offered e.g. AS/A levels.
2. The **Core**- consisting of five components i.e. Key Skills, Wales, Europe and the World, Work-related Education and Personal and Social Education. Individual Study

Together, the Core and Options make up the Welsh Bacculaureate Qualification.

The five components of the Core Programme are:

- **Key Skills** – the Key Skills are Communication, Working with Others, Problem Solving, ICT, Application of Number, and Improving Own Learning and Performance. You develop these through your Options and the four components below.
- **Wales, Europe and the World** – your chance to learn more about Wales and its relationship with Europe and the world. This includes a language module at a level suitable for you.
- **Work-Related Education** – includes working with an employer and taking part in a team enterprise activity to help you understand how businesses work.
- **Personal and Social Education** – helps you explore issues in the modern world: family, health, relationships, citizenship and sustainable development. It also includes an activity in the local community.
- **Individual Investigation** – an opportunity for you to carry out personal research into an area of interest from your optional studies or the core programme.

### **The Welsh Bacculaureate Core within the Advanced Diploma attracts 120 UCAS points, which is the equivalent of an A grade at A Level.**

Greater emphasis will be placed on practical, hands on experiences. Visits and guest speakers will be a core part of the course. ALL pupils will be supported by a personal MENTOR. There is no formal examination to the core, but students will be required to:

- Keep a log book and record experiences
- Collect and collate evidence for all key skills
- Complete an individual investigation on a topic of choice
- The core should be completed by the first term in year 13

### **What are Key Skills?**

These skills are essential to develop and are recognised throughout the country. To progress in their studies effectively and to succeed in work and life, students need to develop their key skills.

It is possible to gain accreditation in each key skill from level 1 (easiest) to level 3 (most difficult.) Students in Years 12 should aim for levels 2 or 3 in each key skill.

### **What are the six key skills?**

**Communication**  
**Application of Number**  
**Information technology**  
**Problem Solving**  
**Working with others**  
**Improving own learning and performance**

### **Pam mae angen Sgiliau Allweddol arnoch?**

Sgiliau Allweddol yw'r sgiliau sylfaenol sy'n effeithio ar bopeth arall rydych yn ei wneud. Gallant helpu i gael graddau uwch. Gallant helpu i wneud yn well yn y gwaith . Mae cyflogwyr, colegau a phrifysgolion yn hoff ohonynt felly maent yn gallu fod o gymorth i ennill swyddi neu le ar gyrsiau. Maen nhw'n ehangu'r ystod swyddi y gellir dewis o'u plith.

### **Why do you need Key Skills?**

Key skills are essential in all that you do .They may help you to achieve higher grades at AS /A Level. They will benefit you in the world of work, Employers and Colleges or Universities look favourably upon students proficient in the key skills They enhance job opportunities. They enable students to be more flexible in their career development .They are useful life skills

## Calendr Blwyddyn 12 a 13 / Year 12 & 13 Calendar

### **Awst / August**

- Canlyniadau TGAU / GCSE Results
- Cyfweiliadau ynglŷn â dewis cwrs a phynciau / Option choice Interviews

### **Medi / September**

- Anwytho a chyflwyno blwyddyn 12 / Introduction and induction
- Cyrsiau UG a Chymhwyster Bagloriaeth Cymru yn dechrau / AS Courses and the Welsh Baccalaureate Qualification begins.

### **Hydref / October**

- Blwyddyn 12 – cofrestru ar gyfer ail eistedd TGAU Saesneg a Mathemateg / Entries for Mathematics and English GCSE re sits.
- Blwyddyn 13 – llenwi ffurflenni UCAS / UCAS forms to be filled

### **Tachwedd / November**

- Blwyddyn 12 / Year 12 – Arholiadau TGAU ail sefyll / GCSE re sit
- Blwyddyn 13 / Year 13 – cyflwyno ffurflenni UCAS / UCAS forms to be presented to tutors.
- Cyfnod asesu blwyddyn 12 a 13 / Year 12 & 13 assessment

### **Rhagfyr / December**

- Aseidiadau blwyddyn 12 a 13 yn cael eu cyflwyno i fyfyrwyr a rhieni / Year 12 & 13 assessments sent to parents
- Blwyddyn 13 - Dyddiad cau ar gyfer ffurflenni UCAS / End date for UCAS submission
- Blwyddyn 13 - Diwrnodau agored a chyfweiliadau gan Golegau/ Universities open days and interviews.

### **Ionawr / January**

- Arholiadau Modylol Uwch Gyfrannol a Safon Uwch / AS / A level modular examinations
- Canlyniadau ail sefyll TGAU / GCSE re sit results
- Blwyddyn 13 - Diwrnodau agored a chyfweiliadau gan Golegau / Open days

### **Chwefror / February**

- Blwyddyn 13 - Diwrnodau agored a chyfweiliadau gan Golegau / Open days

### **Mawrth / March**

- Canlyniadau Maddeuol mis Ionawr / January modular results
- Ffurflenni Mynediad ar gyfer arholiadau'r Haf. AS / A level entries

### **Ebrill / April**

- Ffurflenni Mynediad ar gyfer arholiadau'r Haf. AS / A level entries
- Blwyddyn 12 – dechrau meddwl am ddewis Coleg/Prifysgol / Year 12 to begin the process of choosing universities & colleges.

### **Mai / May**

- Blwyddyn 13 – Dewis terfynol i UCAS / Final UCAS choices
- Blwyddyn 12 - dechrau meddwl am ddewis Coleg/Prifysgol
- Arholiadau Modylol Uwch Gyfrannol a Safon Uwch / AS / A level modular examinations

### **Mehfin / June**

- Arholiadau Modylol Uwch Gyfrannol a Safon Uwch / AS / A level modular examinations
- Blwyddyn 12 – Ffair Addysg Uwch / Higher education fair

### **Gorffennaf / July**

- Profiad Gwaith / Work Experience

**\*\*\*Gall y calendr newid yn ystod y flwyddyn/ this calendar is subject to change\*\*\***

## Adnoddau

- Ystafell Weithio ôl 16
- Llyfrgell
- Ystafell Gyffredin

Bydd disgwyl i chwi astudio'n annibynnol yn un o ganolfannau adnoddau'r Ysgol. Mae rheolau pendant ynglŷn â sut i ddefnyddio'r canolfannau hyn ymgyfarwyddwch yn sydyn â'r rheolau hyn a pharchwch hwy.

Ar hyn o bryd mae gennym y cyfarpar mwyaf modern ar eich cyfer. Bydd cyfrifiadur neu liniadur ar gael ymhob cyfnod di gyswllt. Mae llyfrgell yr ysgol ar gael i bob myfyriwr 6ed dosbarth. A phan fydd cyfle i ymlacio, mae ystafell gyffredin bwrpasol ar eich cyfer gan gynnwys locer personol a chyfarpar ar gyfer lluniaeth.

## Breintiau

Mae'r ystafell gyffredin ar gyfer eich defnydd chi yn unig, a bydd cyfle i chi gymdeithasu efo'ch ffrindiau. Cewch chwarae cerddoriaeth yma yn ystod amser egwyl a chinio. Fe fydd eich tiwtor wedi nodi amseroedd penodol i chi dreulio yn yr ystafell gyffredin.

Er bod gennym reolau ar gyfer myfyrwyr 6ed dosbarth, gobeithir mai hunan ddisgyblaeth fydd yn rheoli eich ymddygiad.

**Gwisg Ysgol** - Disgwylir i bob aelod Blwyddyn 12 a 13 fod yn esiampl i ddisgyblion wrth wisgo'r wisg swyddogol ar gyfer myfyrwyr ôl 16, sef

**Merched** – Blows/crys coch gyda thei swyddogol yr ysgol. Siwmpwr ddu blaen heb logo.

**Bechgyn** – Crys gwyn gyda thei swyddogol yr ysgol. Siwmpwr ddu blaen heb logo.

NI CHANIATEIR GWISGO 'TRAINERS'.

**Cofrestru** - Rhaid i bob aelod o Bl.12 a Bl.13 gofrestru'n brydlon am 8.50 a 1.35.

Nid oes caniatâd i adael tir yr ysgol yn ystod amserlen gwersi'r ysgol.

**Diogelwch** Mae'n ofynnol i bawb fod yn barhaol ymwybodol o safonau diogelwch yn gyffredinol yn yr Ysgol. Os digwydd i chwi sylwi ar unrhyw beth a allai beryglu'r safonau pwysig hyn, dylid rhoi adroddiad yn ddi-oed i un o'r Uwch dim rheoli. Os yw myfyriwr yn teithio i'r Ysgol ar feic modur neu gar, mae'n ofynnol ei fod yn gwneud hynny gyda chaniatâd ei rieni. Ar sail diogelwch, ni chaniateir i fyfyrwyr barcio car na beic modur ar dir yr Ysgol.

**Lwfans Cynhaliath Addysg** Mae'n bosib y gallech fod yn gymwys i wneud cais am LCA. Gallwch dderbyn hyd at £60 i'ch cyfrif banc pob bythefnos. **Pwrpas y lwfans yw helpu gyda'r gost o barhau a'ch addysg**

Rydych yn gymwys am £10 - £30 yr wythnos os ydych yn byw mewn cartref ag incwm blynyddol o £30,000 neu lai.

Gellir cael manylion pellach a ffurflen gais o'r swyddfa.

## Resources

- Post 16 study room
- Library
- Common Room

You will be expected to work and study independently in one of the schools study areas. You will need to familiarise yourself with all rules regarding these centres and adhere to and respect them.

We have the latest equipment available, including laptops and desktop computers for all non contact lessons. You are also welcome to use the common room to socialise and enjoy light refreshments.

## Privileges

The common room is solely for your use. Music is allowed during the morning break and lunch time. Your tutor will give you a personal timetable regarding its use.

**School Uniform** Every post 16 student should be an example to younger pupils in the way they take pride in the official post 16 uniform. Which is:

**Females** - Red blouse / shirt and official school tie. Plain black sweater / jumper without any logo.

**Males** - White shirt and official school tie. Plain black sweater / jumper without any logo.  
TRAINERS ARE NOT ALLOWED.

**Registration** Every student must register promptly at 8.50 and 1.35. There is no permission to leave school during lessons.

**Safety** It is necessary for everybody to be continually aware of safety standards in general in the school. If anyone becomes aware of anything that could endanger these important standards he/she should immediately report it to a senior member of staff. If a student comes to school on a motor bike or in his/her car, he/she must have full parental consent. For safety reasons, students are not allowed to park their cars or motor bikes on school premises.

**Educational Maintenance Allowance.** It is possible that you may be eligible for an EMA grant. The sum of £60 will be deposited into your bank account fortnightly. **The grant is specifically given to ensure that you remain in higher education.**

Currently it is means tested, and you may be eligible for between £10 and £30 a week if the family income is below £30,000

An application form is available at the school office.

## **Opsiynau dewis – Pynciau TAG UG**

Cynigir pynciau ôl 16 Ysgol Dyffryn Ogwen drwy fwrdd arholi CBAC. Ac eithrio Mathemateg, sydd ag amserlen wahanol, mae manyleb pob un pwnc wrthi'n cael eu diwygio ar gyfer cyrsiau fydd yn dechrau ym mis Medi 2008 - gyda'r mwyafrif i ddilyn strwythur 4 uned ond rhai (e.e. y Gwyddorau, Cymraeg, Cerddoriaeth) yn parhau i fod yn fanylebau 6 uned.

Gellir cyrchu copïau o'r manylebau diwygiedig a'r holl fanylebau cyfredol a dogfennaeth berthynol, ac amserlen arholiadau ar wefan y bwrdd arholi: [www.cbac.co.uk](http://www.cbac.co.uk)

## **GCE A/AS/ Subjects**

All 16+ option subjects at Ysgol Dyffryn Ogwen are examined by WJEC. Apart from Mathematics, which operates to a later timetable, these are all in the process of being revised for courses starting in September 2008 - largely to a 4 unit structure but with some (e.g. Sciences, Welsh, Music) remaining as 6 unit specifications.

Copies of the revised specifications and of all current specifications and related documentation, together examination timetables can be accessed at: [www.wjec.co.uk](http://www.wjec.co.uk)

## **CYMRAEG**

### **Blwyddyn 12**

Astudir 3 uned orfodol i'w harholi yn Mai/Mehefin:-

#### **CY1 – Y Ffilm a'r Ddrama a Llafaredd –**

Bydd ymgeiswyr yn astudio un ffilm ac un ddrama ysgrifenedig yn fanwl ac yna'n eu trafod, ni fydd gofyn iddynt gymharu'r ffilm a'r ddrama â'i gilydd ond gofynnir i bob grŵp o dri drafod y ffilm a'r ddrama am oddeutu ½ awr yr un.

#### **CY2 – Gwaith Cwrs Ysgrifenedig**

Bydd gofyn i ymgeiswyr lunio ffolio o dair tasg – creadigol, sgriptio a mynegi barn. Asesir y ffolio'n fewnol a'u hanfon wedyn at safonwr allanol.

#### **CY3 – Defnyddio'r Iaith a Barddoniaeth**

Astudir casgliad gosod o 20 o gerddi gan feirdd yr ugeinfed ganrif ac astudir gramadeg y Gymraeg yn fanwl. Profir gallu'r ymgeiswyr yn y ddau faes yma mewn arholiad ysgrifenedig 2 awr o hyd.

### **Blwyddyn 13**

Astudir 3 uned orfodol i'w harholi yn Mai/Mehefin.

#### **CY4 – Y Nofel a Llafaredd**

Astudir nofel osod yn fanwl yn arwain at arholiad llafar gydag arholwr allanol.

#### **CY5 – Y Chwedlau, yr Hengerdd a'r Cywyddau**

Astudir detholiadau gosod o hen ryddiaith a hen farddoniaeth Gymraeg o'r 5ed i'r 16eg ganrif yn arwain at arholiad ysgrifenedig 2½ awr.

#### **CY6 – Defnyddio'r Iaith a Gwerthfawrogi Rhyddiaith a Barddoniaeth**

Bydd arholiad 3 awr ar derfyn y cwrs; bydd gofyn i ymgeiswyr ysgrifennu tasg ymarferol yn ôl canllawiau pendant a hefyd werthfawrogi un gerdd ac un darn o ryddiaith ar yr olwg gyntaf. Bydd ymgeiswyr yn ymarfer y sgiliau yma yn ystod y flwyddyn a bydd asesiad synoptig yn rhan o'r marc terfynol.

## **WELSH**

### **Advanced Subsidiary – Year 12**

3 compulsory units to be examined in May/June.

#### **CY1 – The Film and Play and Oracy**

Candidates will study one film and one written play in detail and then discuss them in an oral examination upon the visit of an external examiner. They will not be expected to compare the film and play but each group of three will be expected to discuss the film and the play for about ½ an hour a piece.

#### **CY2 – Written course Work**

Candidates will be expected to produce a folio of three tasks, creative, sgripting and expressing an opinion. The folio will be assessed internally and then sent to an external moderator.

#### **CY3 – Use of Language and Poetry**

A set collection of 20 poems by 20<sup>th</sup> century poets will be studied and also candidates will study Welsh grammar in detail. The candidates' will prove their ability in these two fields of study in a 2 hour written examination.

### **Advanced Level – Year 13**

3 compulsory units to be examined in May/June.

#### **CY4 – The Novel and Oracy**

A set novel is studied in detail leading to an oral examination with an external examiner.

#### **CY5 – The Tales, the Ancient Poetry and Poems of the Middle Ages**

A set selection of extracts from Old Welsh poetry and prose from the 6<sup>th</sup> to the 16<sup>th</sup> century are studied in preparation for a 2½hour written examination.

#### **CY6 – The Use of Language and Appreciation of Prose and Poetry**

In the 3 hour examination at the end of the course, applicants will be expected to write a practical task according to definite guidelines and also write an appreciation of an unseen poem and another of an unseen prose extract. Candidates will rehearse these skills during their year's study and synoptic assessment will be part of their final mark.



## **SAESNEG / ENGLISH**

At Ysgol Dyffryn Ogwen students will study English Language and Literature at A level. In Year 12 students will have the opportunity to extend the work undertaken at GCSE level and to develop their skills in relation to English. Students will analyse the language and content of both literary texts and non-literary texts, and will write for specific audiences and purposes.

Students will consider the contextual factors affecting a variety of texts and will consider all texts in relation to the following:

- Subject
- Purpose
- Genre
- Audience
- Mode

All students will explore the nature of spoken language in detail and look specifically at areas of linguistics. Students will also develop of their own writing skills as there are three tasks for internal assessment, which center on creative writing.

AS (2 units)

LL1 – 30% - 2 ½ hour Written Paper

Critical Reading of Literary and Non-Literary Texts

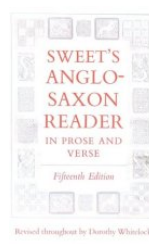
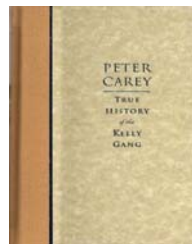
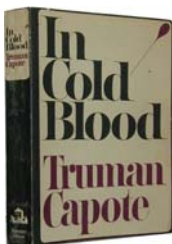
- Section A: Poetry pre-1900(closed text) + unsen text
- Section B: Prose (open text)

LL2 – 20% Internal Assessment

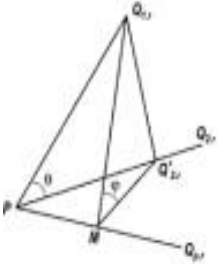
Creative Writing – 3 tasks

- 2 creative writing tasks
- Commentary on both creative writing tasks

Pupils must achieve a grade B or above at GCSE level in order to study this subject at A Level.



## MATHEMATEG / MATHEMATICS



Gall astudio mathemateg Safon Uwch gynnig amrywiaeth o gyfleoedd mewn Addysg Uwch, Busnes, Cyfrifeg, Gwasanaeth Sifil, Peirianeg ... yn ôl cyfuniad pynciau a ddewiswyd. Mae'n bwnc pwysig ac yn gymhwyster delfrydol ar gyfer amrediad o gyrsiau.

Studying Mathematics at A level can provide a variety of openings in Higher Education, Business, Accountancy, Civil Service, and Engineering .... depending on the combination of subjects chosen. It is an important subject and is an ideal qualification for a wide range of courses.

Mae mathemateg Safon Uwch yn anoddach na mathemateg TGAU – nid parhad syml o gwrs TGAU ydyw ac felly ystyrir graddau A\*, A neu B TGAU yn ddymunol. Mae'n gwrs sy'n cynnwys llawer o ymarferion mathemategol ac felly'n golygu bod yn rhaid i ddisgyblion feddu ar y gallu i weithio'n gyson a thrylwyr.

A Level Mathematics is more difficult than GCSE – it is not a simple continuation of GCSE and therefore grade A\*, A or B at GCSE is considered desirable. It is a demanding course, which means pupils must possess the correct aptitude and the ability to complete work thoroughly on a regular basis.

Mae tair elfen i'r cwrs:

Mathemateg Bur  
Mecaneg  
Ystadegaeth  
Pure Mathematics  
Mechanics  
Statistics

There are three elements to the course:

### Crynodeb o'r Asesiad

Bydd ymgeiswyr yn sefyll chwe phapur arholiad 1½ awr dros y ddwy flynedd gan arwain at dystysgrif Safon Uwch (SU):

C1 (di-gyfrifiannell), C2, C3, C4 – Mathemateg Bur (Craidd)  
M1 – Mecaneg.  
S1 – Ystadegaeth.

Bydd ymgeiswyr yn sefyll tri phapur ym mlwyddyn 12. Bydd hyn yn arwain at dystysgrif Uwch Gyfrannol (UG).

Bydd cyfle i ail sefyll modylau ym mlwyddyn 13.

### Summary of Assessment

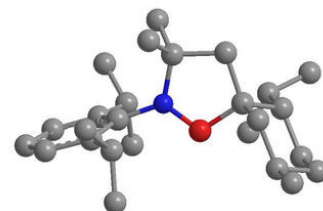
Candidates sit six 1½ hour papers over the two year course which leads to an Advanced Level (A-level) certificate:

Candidates will sit three papers in Year 12. These will lead to an Advanced Subsidiary (AS) certificate.

C1 (non-calculator), C2, C3, C4 – Pure Mathematics (core)  
M1 – Mechanics  
S1 – Statistics

Opportunity will be given to re-sit modules in Year 13.

## CEMEG / CHEMISTRY



Amcanion y cwrs: Annog myfyrwyr...

- i ddeall bod cemeg yn ymwneud â defnyddio adnoddau'r Ddaear i gynhyrchu egni a deunyddiau newydd trwy reoli a defnyddio adweithiau cemegol
- i ddeall bod cemegwyr yn gallu llunio deunyddiau newydd at bwrpasau penodol trwy edrych ar ymddygiad deunyddiau gwahanol
- i sylweddoli bod cemeg yn chwarae rôl hanfodol wrth wella ansawdd bywyd

Aims of course: Encourage students...

- to understand that chemistry is concerned with the use of the Earth's resources in the production of energy and new materials by the control and use of chemical reactions
- to understand that the behaviour of materials allows chemists to design new materials for specific uses
- to realise that chemistry plays a vital role in providing an enhanced quality of life

Cynnwys y cwrs

CH1 : Rheoli a Defnyddio Newidiadau Cemegol (20%)

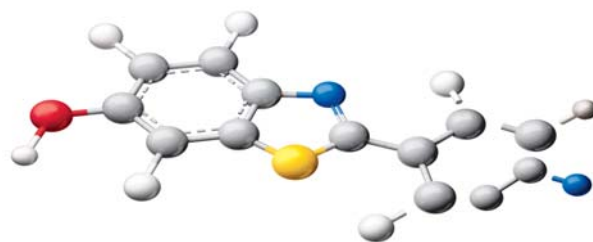
CH2 : Priodweddau, Adeiledd a Bondio (20%)

CH3 : UG Uned Ymarferol Cemeg (10%)

CH4 : Sbectrosgopeg a Chemeg Organig (20%)

CH5 : Cemeg Ffisegol ac Anorganig (20%)

CH6 : U2 Uned Ymarferol Cemeg (10%)



Mae gwaith ymarferol yn rhan annotod o'r cwrs. Yn ychwanegol i'r gwaith ymarferol a wneir yn labordy'r ysgol bydd cyfle i'r myfyrwyr fynychu sesiynau ymarferol ac adolygu yn Adran Gemeg Prifysgol Cymru Bangor.

Course content

CH1 : Controlling and Using Chemical Changes (20%)

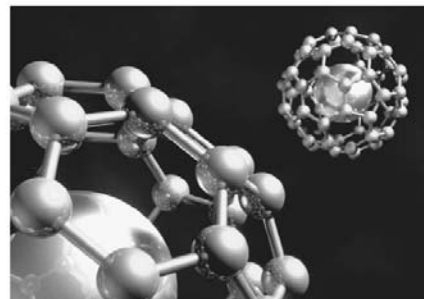
CH2 : Properties, Structure and Bonding (20%)

CH3 : AS Practical assessment (10%)

CH4 : Spectroscopy and Organic Chemistry (20%)

CH5 : Physical and Inorganic Chemistry (20%)

CH6 : A2 Practical assessment (10%)



Practical work is an intrinsic part of the course. In addition to the practical work done in the school laboratory there will be an opportunity for the students to participate in practical and revision sessions at the University of Wales, Bangor's Chemistry Department.

Gofynion

Graddau A\* i B TGAU Gwyddoniaeth / Gwyddoniaeth Ychwanegol.

Byddai'n fuddiol i fyfyrwyr ddilyn cwrs ychwanegol mewn gwyddoniaeth neu fathemateg UG/U

Requirements

A\* to B grades GCSE Science / Additional Science.

Students would benefit from following an additional science or maths A-level.

## **BIOLEG / BIOLOGY**

### Amcanion y cwrs

- datblygu diddordeb yn y pwnc, a allai arwain at astudiaeth bellach a gyfaoedd gwyddonol
- datblygu gwybodaeth a dealltwriaeth o wahanol feysydd yn y pwnc a'r cysylltiadau rhyngddynt
- gwerthfawrogi pwysigrwydd materion gwyddonol a sut mae gwyddoniaeth yn cyfrannu at lwyddiant yr economi a chymdeithas

### Aims of course

- develop an interest in the subject, which may lead to further study and careers in science
- develop knowledge and understanding of different areas of the subject and how they relate to each other
- appreciate the importance of scientific issues and how the sciences contribute to the success of the economy and society

### Cynnwys y cwrs

BY1 : Biocemeg a threfniant sylfaenol (20%)

BY2 : Bioamrywiaeth a ffisioleg systemau'r corff (20%)

BY3 : UG Aseiad ymarferol (10%)

BY4 : Metabolaeth, Microbioleg ac Homeostasis (20%)

BY5 : Yr amgylchedd, Geneteg ac Esblygiad (20%)

BY6 : U2 Aseiad ymarferol (10%)

Efallai bydd cyfle i astudio Bioleg Dynol ym ml. 12, ble byddai rhai agweddau o BY2 yn cael eu disodli gan destynau fel mecanwaith amddiffyn bodau dynol ac afiechydon. Fodd bynnag os byddai myfyriwr yn parhau i lefel A2, yna dilynir unedau Bioleg yn unig ym mlwyddyn 13 ac felly cânt Lefel A Bioleg lawn (er bod uned Bioleg Dynol wedi ei ddilyn ym ml.12)



### Course content

BY1 : Basic Biochemistry and organisation (20%)

BY2 : Biodiversity and physiology of Body Systems (20%)

BY3 : AS Practical assessment (10%)

BY4 : Metabolism, Microbiology and Homeostasis (20%)

BY5 : Environment, Genetics and Evolution (20%)

BY6 : A2 Practical assessment (10%)

There may be an option to study Human Biology in year 12, where some aspects of BY2 would be replaced by topics such as human defence mechanisms and disease. However if students were to continue to A2 level, only the Biology units would be studied in year 13, so overall they would leave with a full Biology A level (although a Human Biology unit was studied in year 12).



### Gofynion

Gradd A\*-B TGAU Gwyddoniaeth / Gwyddoniaeth Ychwanegol ar yr Haen Uwch.

Buasai'n fuddiol i fyfyrwyr ddilyn cwrs gwyddonol ychwanegol neu fathemateg ar Safon uwch.

### Requirements

A grade A\*- B at Higher Tier GCSE Science / Additional Science is preferable.

Students would benefit from following an additional science or maths at A-level.

## FFISEG / PHYSICS

### Amcanion y cwrs

- Datblygu a gwerthfawrogi Ffiseg fel llwybr ar gyfer astudiaethau pellach
- Deall prosesau Ffiseg a sut mae'r pwnc yn datblygu trwy arbrofi, theori, dirnadaeth a myfyrdod creadigol
- Gwerthfawrogi rôl Ffiseg yn y gymdeithas, yn enwedig sut mae darganfyddiadau yn cael eu defnyddio mewn diwydiant a meddygaeth a sut y gwneir penderfyniadau am ei ddefnydd



### Aims of course

- develop an enthusiasm for Physics and, where appropriate to pursue this enthusiasm in its further study
- understand the processes of Physics, as a Natural Science, the way the subject develops through experiment, theory, insight and creative thought
- appreciate the role of Physics in society, in particular how its discoveries are applied in industry and medicine and how decisions about its use are made

### Cynnwys y cwrs

PH1: Mudiant, Egni A Gwefr (20%)

PH2: Tonnau A Gronynnau (20%)

PH3: Ffiseg Arbrofol (10%)

PH4: Osgiliadau A Meysydd (18%)

PH5: Elecromagnetedd, Niwclysau A Opsiynau (22%)

PH6: Ffiseg Arbrofol (10%)



### Course content

PH1: Motion, Energy & Charge (20%)

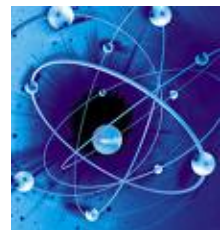
PH2: Wave & Particles (20%)

PH3: Practical Physics (10%)

PH4: Oscillations & Fields (18%)

PH5: Electromagnetism, Nuclei & Option (22%)

PH6: Experimental Physics (10%)



### Gofynion

Gradd A\*-B TGAU Gwyddoniaeth / Gwyddoniaeth Ychwanegol ar yr Haen Uwch.

Byddai'n fuddiol i fyfyrwyr dilyn cwrs ychwanegol UG/U gwyddonol neu fathemateg.

### Requirements

A\*- B grade at Higher Tier GCSE Science / Additional Science is preferable.

Students would benefit from following an additional science course or maths at A-level.

## **DYLUNIO A THECHNOLEG / DESIGN AND TECHNOLOGY**



Mae Dylunio Cynnyrch (Product Design) yn cynnig dilyniant i ymgeiswyr sydd wedi astudio cwrs Dylunio a Thechnoleg TGAU drwy Technoleg Defnyddiau Gwrthiannol neu Dechnoleg Tecstilau.

Product Design offers progression for candidates who have studied GCSE Design and Technology through Resistant Materials Technology or Textiles Technology.

### **MAE UG yn cynnwys tair uned:**

- 2 Uned o waith cwrs yr argymhellir o 40 awr o amser dan oruchwyliaeth (gwerth 20%)
- 1 papur Arholiad, 1½ yn ei hyd.
- Astudiaeth achos sy'n cynnwys lleoliad tu allan i'r ysgol (gwerth 15%), neu dewis creu dadansoddiad cynnyrch (gwerth 15%).

### **The AS is made up of three units:**

- 2 Units of coursework with a recommended duration of 40 hours supervised time (a weighting of 20%)
- 1 examination paper – 1½hours.
- A Case Study involving a placement in the world outside of school (a weighting of 15% of full A Level course) or a produce analysis (worth 15%).

### **U2**

Mae U2 hefyd yn cynnwys 1 prif brosiect. Mae'r prosiect werth 30% o gyfanswm y marciau a ddyfarnir a bydd yn rhoi cyfle i ymgeiswyr gyflawni gweithgaredd 'dylunio a gwneud' mawr. Unwaith eto rhoddir rhestr o gyd-destunau posibl gan CBAC, ond rhoddir cyfle hefyd i'r ymgeiswyr gyflwyno eu cynigion eu hunain i'w cymeradwyo. Hefyd papur arholiad 2 awr.

Gellir defnyddio cymhwyster Dylunio a Thechnoleg i ddiogelu mynediad i fwyafrif o sefydliadau Addysg Uwch. Mae'n sylfaen gadarn ar gyfer gyrfa mewn peirianeg (adeiladol neu fecanyddol), pensaernïaeth, dylunio a gwyddoniaeth. Mae'r cwrs yn gofyn am fyfyrwyr sydd â sgiliau graffigol ac ymarferol, gallu dychmygol, meddwl deallus, hunan ysgogiad ac unigolyn sy'n gallu cydweithio ag eraill.

### **A2**

A2 also consists one major project. As in the current A level syllabus, the project is worth 30% of the total available marks and will provide candidates with the opportunity to undertake a major 'design and make' activity. Once again a list of possible contexts will be provided by WJEC, but candidates will also be given the opportunity to submit their own proposals for approval. Also a 2 hour exam paper.

Design and Technology qualification can be used as an entrance qualification to most Higher Education establishments. It is a sound basis for a career in engineering (constructional and mechanical) architecture, design and science. The course requires a student who has an imaginative ability, a reasoning mind, self motivation and one who is capable of working with others.

## **TECHNOLEG GWYBODAETH A CHYFATHREBU** **INFORMATION AND COMMUNICATION TECHNOLOGY**

Cynnwys y cwrs / Course Content

### IT1

Rhan A / Section A

Gwybodaeth: Natur, rol a chyd-destun / Information: Nature, Role and Context

- 4.1.1 Data a gwybodaeth / Knowledge information and data
- 4.1.2 Pwysigrwydd a gwaith gwybodaeth / Value and importance of information
- 4.1.3 Ansawdd gwybodaeth / Quality of information
- 4.1.4. Dilysiad a Gwriad / Validation and Verification
- 4.1.5 Gallu a chyfyngder Technoleg Gwybodaeth a Chyfathrebu / Capabilities and limitations of ICT
- 4.1.6 Defnydd o Technoleg Gwybodaeth a Chyfathrebu / Uses of ICT
- 4.1.7 Cyflwyno Gwybodaeth / Presenting Information
- 4.1.8 Rhwydwethiau / Networks
- 4.1.9 Rhyngwyneb Cyfrifiadur-Dyn (HCI) / Human Computer Interface (HCI)
- 4.1.10 Materion Cymdeithasol / Social Issues
- 4.1.11 Systemau Bas Data / Database Systems



Rhan B / Section B

- 4.1.12 Modelu Taenlen – Gwaith Ymarferol

Modelu Efelychiad

Modelling – Practical work

Simulation Modelling

### IT2

- 4.2 Cyflwyno Gwybodaeth – Gwaith Ymarferol / Design and produce a DTP document e.g. Newsletter.

- Tasg 1/Task 1: Cynllunio dogfen DTP e.e. Taflen newyddion / Design and produce a DTP document e.g. Newsletter
- Tasg 2/Task 2: Dogfennau awtomataidd e.e. Postfynno / Automated documents e.g. Mailmerge
- Tasg 3/Task 3: Cyflwyniad e.e. Power Point ney Safle We / Presentation e.g. Power Point or Web Site.

### A2

### IT3

- 4.3.1 Rhwydweithiau / Networks
- 4.3.2 Y Rhyngwyd / The Internet
- 4.3.3 Rhyngwyneb Cyfrifiadur-Dyn (HCI) / Human Computer Interface (HCI)
- 4.3.4 Gweithio â TGCh / Working with ICT
- 4.3.5 Polisiau Diogelwch TGCh / ICT Security Policies
- 4.3.6 Systemau Cronfa Ddata / Database Systems
- 4.3.7 Rheoli Newid / Management of Change
- 4.3.8 Rheolaeth Systemau Gwybodaeth / Management Information Systems
- 4.3.9 Systemau Datblygu Cylchred Bywyd / System Development Life Cycle

### IT4

Bas data Perthynol – Creu a Chynllunio basdata perthynol – Gwaith Ymarferol.  
Relational Database – Design and create a relational database – Practical Work.

## HANES / HISTORY



### **Cynnwys / Content**

1. Astudiaeth o gyfnod  
Agweddau ar Hanes Cymru a Lloegr 1485-1603.  
Cyfnod y Tuduriaid. Dwy arholiad – H1.1 Blwyddyn 12, H1.2. Blwyddyn 13.
  2. Astudiaeth Fanwl - Yr Almaen Natsiaidd 1933-1945  
Sefydlu unbennaeth Hitler. Ei bolisiau tuag at ferched, pobl ifanc, addysg, celfyddydau a'r Iddewon.  
Arswyd, ofn a gwrthwynebiad i'r Natsiaid.  
Yr Almaen a'r Ail Ryfel Byd.  
Dwy arholiad – H.1.2. Blwyddyn 12, H.1.4. Blwyddyn 13.
  3. Gwaith cwrs – Ym mlwyddyn 13 bydd elfin gwaith cwrs fydd yn cael ei osod a'i farcio'n fewnol – astudiaeth o ffynonellau a gwaith ymchwiliol ar yr Almaen Natsiaidd.
- 
1. Period study  
Aspects of the History of Wales and England 1485-1603.  
The Tudor Period. Two exams – H.1. Year 12, H.2. Year 13.
  2. In Depth Studies – Nazi Germany 1933 - 1945  
The establishment of Hitler's dictatorship. His policies towards women, youth, education, the arts, Jews.  
Terror, conformity and opposition.  
Germany and the Second World War.  
Two exams – H.1.2. Year 12, H.1.4. Year 13.
  3. Coursework  
In year 13 coursework is set and marked internally – the study of various sources and research work on Nazi Germany.

### **Sgiliau / Skills**

Bydd y cwrs yn adeiladu ac yn ymestyn y sgiliau a ddatblygwyd yn TGAU.

- Sicrhau gwybodaeth a dealltwriaeth.
- Deall y ffordd mae'r gorffennol wedi ei ddehongli gan haneswyr.
- Gwerthuso gwahanol ffynonellau.
- Deall arwyddocâd digwyddiadau ac unigolion.
- Mynegi barn drwy gyfathrebu yn effeithiol.

The course will build upon the skills that were developed in GCSE.

- Acquire knowledge and understanding.
- Understand how the past has been interpreted by historians.
- Use a range of sources
- Understand the significance of events and individuals
- Express an opinion through effective communication.

## DAEARYDDIAETH



### **Blwyddyn 12**

#### **GG1. Prosesau yn yr amgylchedd naturiol.**

- Platau tectoneg, llosgfynyddoedd a daeargrynfeydd.
- Basn draeniad. Effeithiau ac achosion llifogydd.
- Ecosystemau. (ecosystemau graddfa fach).

#### **GG2. Prosesau yn yr amgylchedd dynol.**

- Newid mewn poblogaeth.
- Newid yn yr amgylchedd gwledig.
- Newid yn yr amgylchedd trefol.

#### **GG3. Uned ymchwiliol.**

Cynhyrchu darn o waith cwrs yn seiliedig ar ddata a gasglwyd yn ystod gwaith maes. Darn ysgrifenedig dim mwy na 2000 o eiriau. Rhaid dangos eu body n gyfarwydd a sut i gynllunio ymchwiliad e.e. y fethodoleg, casglu data, disgrifio, dadansoddi a.y.y.b.

## GEOGRAPHY

### **Year 12**

#### **GG1. Processes in the natural environment. (33.3%)**

- Tectonic plates, volcanoes, earthquakes
- Effects and reasons for floods
- Ecosystems.

#### **GG2. Processes in the urban environment. (33.3%)**

- Changes in population
- Changing rural areas
- Changing urban areas.

#### **GG3. Research unit. (33.3%)**

Produce a piece of coursework based on data collected from fieldwork. A piece of written work no more than 2000 words. Students are required to show that they are aware of how to produce an enquiry e.g. the methodology, data collection, describing the outcomes.

## ASTUDIAETHAU CREFYDDOL / RELIGIOUS STUDIES



### **Pam ddylwn i astudio Astudiaethau Crefyddol ? / Why should I study Religious Studies?**

- Oherwydd mae'n ddiddorol! Mae'n delio â'r materion mawr sy'n fwyaf pwysig mewn bywyd dynol. Fe fydd yn eich helpu chi i ddeall bywyd yn well.
- Because it is interesting. It deals with the big issues that are most important in human life. It will help you to understand life better.

### **UG – Dau o'r canlynol:- / AS – Two of the following:-**

- Crefydd yn y Gymdeithas Gyfoes
- Crefydd a Moeseg
- Crefyddau'r Dwyrain (nail ai Bwdhaeth neu Hindŵaeth neu Sikhiaeth)
- Religion in Contemporary Society
- Religion and Ethics
- Eastern Religions (either Buddhism or Hinduism or Sikhism)

### **U2 – Un o'r canlynol:- / A2 – One of the following:-**

- Crefydd yn y Gymdeithas Gyfoes
- Crefydd a Moeseg
- Crefyddau'r Dwyrain (nail ai Bwdhaeth neu Hindŵaeth neu Sikhiaeth)

**Yn ogystal â:-** Crefydd a'r Prifad Dynol (nail ai Awdurdod Crefyddol neu Profiad Crefyddol neu Bywyd, Marwolaeth a Bywyd ar ôl Marwolaeth).

- Religion in Contemporary Society
- Religion and Ethics
- Eastern Religions (either Buddhism or Hinduism or Sikhism)

**Plus:-** Religion and Human Experience (either Religious Authority or Religious Experience or Life, Death and Life After Death).

### **Beth fyddaf yn ei ddysgu? / What will I learn?**

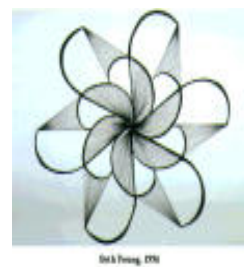
Bydd pob uned yn helaethu eich dealltwriaeth o gredoau ac arferion crefyddol a sut y meant yn effeithio ar fywydau pobl. Mae rhai unedau'n pwysleisio materion moesol, mae eraill yn astudio crefydd penodol yn fanwl. Fe fyddwch yn datblygu sgiliau meddwl. Fe fyddwch hefyd yn cael eich herio a'ch helpu i ddysgu mwy amdanoch chi eich hunain.

All units will enlarge your understanding of religious beliefs and practices and how they affect people's lives. Some units emphasise moral issues; others study a particular religion in depth. You will develop thinking skills. You will also be challenged and helped to learn more about yourself.

## CELF A DYLUNIO / ART AND DESIGN

Amcanion y cwrs: Annog myfyrwyr...

- i ddeall bod celf yn gwrs astudio gwerthfawr, pleserus a chyflawn sy'n ehangu profiad, yn datblygu'r dychymyg, yn meithrin creadigrwydd ac yn hybu datblygiad personol a chymdeithasol.
- i ddeall bod celf yn cynnig cyfleoedd i weithio tuag at yrfaeodded eang fel artistiaid, crefftwyr a dylunwyr.
- I ddeall bod celf yn chwarae rol bwysig wrth ddylanwadu ar ein byd gweledol, chyffyrddol ac ymarferol.



Aims of course: Encourage students ...

- to understand that Art and Design provides a worthwhile, satisfying and complete course of study, which broadens experience, develops imagination, fosters creativity and promotes personal and social development.
- to understand that Art and Design provides opportunities to work towards a variety of careers as artists, craft workers and designers.
- to understand that Art and design plays an important role in influencing our visual, tactile and practical world.

Cynnwys y cwrs

ART1(UG) : Portffolio gwaith cwrs(60%)

- Dangos gwahanol brosesau wedi'u datblygu o fannau cychwyn personol

ART2(UG) : Aseiniad dan oruchwyliaeth(40%)

- Aseiniad wedi ei osod yn allanol yn dangos bwriadau personol yn ystod cyfnod parhaus o astudiaeth ddwys, a phrawf dan oruchwyliaeth am 8 awr.

ART3(U) : Ymchwiliad personol (30%)

ART4(U) : Aseiniad dan oruchwyliaeth 12 awr (20%)

Mae ymweld ag arddangosfeydd yn rhan annatod o'r cwrs, fel uniogolion a, ble maen bosibl, ymweliad ysgol.

Course content

ART1(AS) : Coursework portfolio (60%)

- Demonstrating different processes developed from personal starting points

ART2(AS) : Controlled assignment (40%)

- demonstrating personal intentions during a continuous period of focused study and 8hour supervised test.

ART3(A) :Personal investigation (30%)

ART4(A) :Controlled assignment (20%)

Visiting exhibitions either as individuals or as school trips is an essential part of the course.

Gofynion

Graddau A\*-C Celf a Dylunio TGAU

Requirements

A\* to C grades GCSE Art and Design

## **ADDYSG GORFFOROL**

### **Blwyddyn 12**

- P.E. 1 Tymor Cyntaf. Cymeryd rhan mewn 4 gweithgaredd ymarferol gan gofnodi cyfranogiad.  
Cyflwyniad i Berfformiad mewn Gweithgaredd Corfforol.
- P.E. 2 Ail Dymor.  
Yma bydd yr asesiad ar gynnwys portffolio o tua 2, 800 o eiriau ar DDATBLYGU Perfformiad Trwy Gyfranogiad.
- P.E. 3 Trydydd Tymor.  
Cyfranogiad a Pherfformiad Mewn Gweithgaredd Corfforol yn (1) Hanesyddol, (2) Gymdeithasol, (3) Ddiwylliannol a Moesol.



### **Blwyddyn 13**

- P.E. 4 Tymor Cyntaf. Cymeryd rhan mewn 2 gweithgaredd ymarferol.  
Ymarfer; lechyd a Ffitrwydd.
- P.E. 5 Datblygu Perfformiad i'r Eithaf.  
Dau weithgaredd yn adeiladu ar gynnwys P.E. 2.  
Adroddiad o tua 3,000 o eiriau.
- P.E. 6 Cyfranogiad mewn Addysg Gorfforol.  
Meddwl yn fyd eang, actio yn lleol.  
Edrych yn wrthrychol ar Addysg Gorfforol a Chwaraeon yn fyd eang a lleol.

## **PHYSICAL EDUCATION**

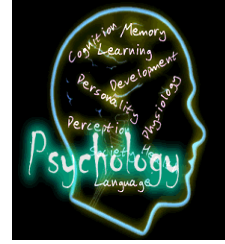
### **Year 12**

- P.E.1 - First Term. Participation in 4 chosen activities, recording participation.  
An introduction to performance in physical activity.
- P.E.2 - Second Term  
Developing performance in physical activity.  
Assessment Based on a 2,800 word Portfolio.
- P.E.3 - Third Term  
Participation and performance in physical activity.  
(1) Historical, (2) Social, (3) Cultural and moral issues.

### **A Level**

- P.E.4 First Term. Participation in 2 chosen activities.  
Exercise health and fitness.
- P.E.5 Optimal Performance  
Two activities as a follow up to PE2.  
Assessment based on a 3,000 word report.
- P.E.6 Participation in Physical Activity
- Thinking Globally Acting Locally.
  - Looking at PE and Sport at World level and local stage.
  - Examination based on two essays from a choice of three subjects – 2 hours long.

## SEICOLEG / PSYCHOLOGY



Astudiaeth o'r meddwl ac o ymddygiad yw Seicoleg. Mae Lefel A mewn Seicoleg yn gallu arwain at gyrsiau mewn: Seicoleg, Gwyddoniaeth Gymdeithasol, Y Gyfraith, Addysg a Meddygaeth. Mae Seicoleg hefyd yn cynnig sgiliau sy'n addas i swyddi o fewn y sector cyhoeddus (e.e. dysgu, nyrsio, yr heddlu a gwaith cymdeithasol), newyddiaduraeth, hysbysebu ac ymchwil marchnata.

### **Blwyddyn 12 – Dau Fodiwl**

- PY1 - Cyflwyniad i Seicoleg. Edrych ar feysydd megis datblygiad personoliaeth, triniaeth afiechydon meddwl a gwaith Freud.
- PY2 - Ymchwiliadau pwysig y byd Seicoleg. Bydd cyfle i astudio ymchwiliadau pwysig megis astudiaeth ar ddysgu iaith i epa; astudiaeth o'r hyn sy'n gwneud i bobl ufuddhau; astudiaeth o'r modd y darganfuwyd gwaith y gwahanol rannau sydd i'r ymennydd ac astudiaeth sy'n esbonio beth mae rhywun yn chwilio amdano mewn perthynas.

### **Blwyddyn 13 – Dau Fodiwl**

Yn yr ail flwyddyn bydd disgyblion yn astudio'r pynciau canlynol, ymhlith eraill: Afiechydon Meddwl (fel 'Schizophrenia'), Cysgu a Hypnosis, a Datblygiad Personoliaeth.

Mae'r ymchwiliad yn rhan bwysig iawn o'r ail flwyddyn. Bydd y gwaith yma yn ddarn gwreiddiol o ymchwil ar unrhyw faes o fewn y pwnc. Bydd arweiniad ar gael gan y tiwtor a bydd modd defnyddio ffrindiau, cyd-ddisgyblion neu aelodau'r teulu fel testun i'r arbrofion.

Psychology is the study of the mind and behaviour. A Level Psychology can lead to courses in Psychology, Social Sciences, Law, Education and Medicine. Psychology also offers suitable skills for many jobs within the public sectors (e.g. teaching, nursing, police, social work), journalism, market research, advertising and PR.

### **Year 12 – Two Modules**

- PY1 – Introduction to the field of Psychology, studying areas such as personality development, treatment of mental disorders and the work of Freud.
- PY2 – Important Investigations in Psychology – This is an opportunity to study the important works of Psychological research such as teaching language skills to apes, a study into what makes obedient individuals, a study into the functions of different parts of the brain and a study into what someone is looking for when starting a relationship.

### **Year 13 – Two Modules**

During the second year, the following topics are studied: Mental disorders (such as Schizophrenia), Sleeping and Hypnosis, and Personality Development.

An important part of the second year will be the psychological investigation. The student will be carrying out research in any psychological field that interests them under the supervision of their tutor, usually using friends, fellow pupils, or family as subjects for their experiments.

## **CYMDEITHASEG**

Byddwch yn edrych ar y gwahaniaethau rhwng y dosbarth gweithiol a'r dosbarth canol, y gwahaniaethau rhwng dynion a merched ym myd gwaith, ac effeithiau cymdeithasol ar grwpiau ethnig a phobl ifanc.



### **Blwyddyn 12.**

Fe astudir yr unedau canlynol yn y flwyddyn gyntaf:

#### **Uned 1. Caffael Diwylliant Teulu a Diwylliant**

trosglwyddo diwylliant / rol y teulu / newid yn ffurf y teulu / rol y fam a'r tad / dirywiad yn y teulu / ystadegau priodas ac ysgariad / teuluoedd un rhiant / trais yn y teulu / camdrin plant / dylanwad ffeministaeth

#### **Uned 2. Deall Diwylliant Deall Addysg / Dulliau Ymchwil**

cyrhaeddiad addysgol / oes gwahaniaeth rhwng y dosbarth gweithiol a'r dosbarth canol / beth yw'r cwricwlwm cudd / anghydraddoldeb ethnig a gwahaniaethau rhyw mewn addysg / amddifadiad materol/ amddifadiad diwylliannol/ diwylliant gwrthysgol/ galwedigaethedd/ dulliau ymchwil / casglu tystiolaeth / datrys data / dehongli gwybodaeth / holiaduron/ cyfweliadau/arsyllu/ materion moesegol/cyfrinachedd/preifatrwydd

## **SOCIOLOGY**

We look at the differences between the working class and the middle class, between males and females, and how society affects ethnic groups and young people.

Year 12      The following units will be studied in the first year:

#### **Unit 1 - Acquiring Culture ( 20% ) Families and Culture**

transmitting culture/role of the family/changes in the family structure/gender roles/family diversity/marriage and divorce statistics/single parent families/violence in the family/child abuse/feminism

#### **Unit 2 – Understanding Culture ( 30% ) Understanding Education / Research Skills**

educational achievement/differences between working class and middle class/hidden curriculum/ethnic inequality and gender inequality/material deprivation/cultural deprivation/anti-school subculture/ vocationalism/ research skills/gathering evidence/solving data/questionnaires/ interviews/observation/ ethical issues/confidentiality/invasion of privacy

**Assessment for AS:** two examination papers – ( 1 hour / 1 hour 30 minutes)

